

# Cockroach and Crawling Insect Trapping



- ✓ Identify population size and species
- ✓ Understand pest distribution
- ✓ Track down sources of infestation fast
- ✓ Find the earliest signs of pests
- ✓ Locate very small insect numbers
- ✓ Reduce the number of control treatments
- ✓ Assess the efficiency of control measures
- ✓ Use where pesticides cannot be used



Find out more at  
[www.agrisense.co.uk](http://www.agrisense.co.uk)





## Cockroach Trapping

Cockroaches are an ever present problem in residential and industrial situations, despite the range of chemical treatments available to control them. Populations often become well established before being seen, with the subsequent difficulty of locating the sources and treating the problem effectively.

There are four main problems associated with cockroach infestation

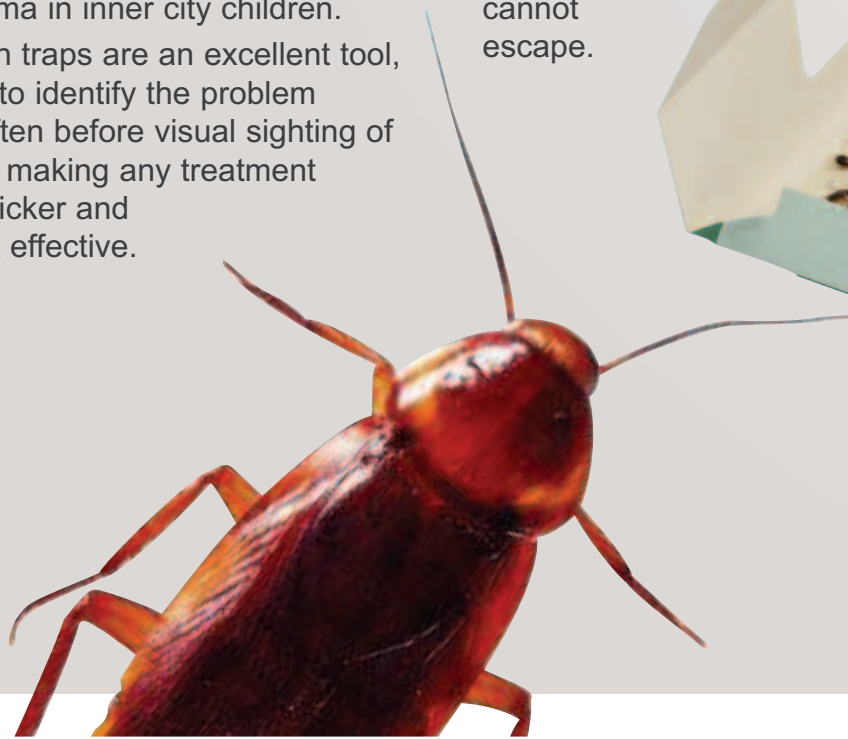
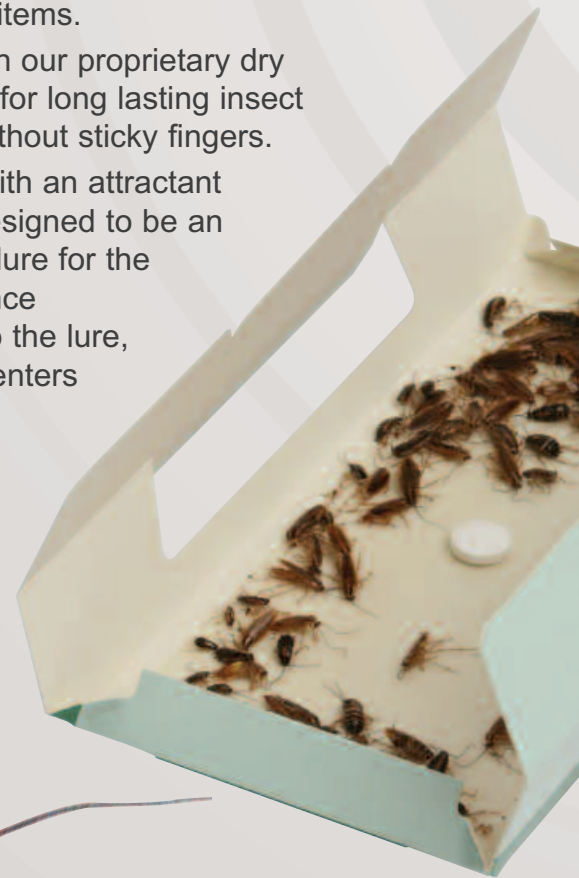
- Aesthetic damage  
Embarrassing unsightly detritus around infested areas.
- Mechanical damage  
Contamination of food and surfaces, staining of clothes.
- Disease transmission  
Cockroaches have been shown to transmit disease.
- Allergies & asthma  
Cockroaches are number 1 cause of asthma in inner city children.

Cockroach traps are an excellent tool, designed to identify the problem quickly, often before visual sighting of an insect, making any treatment easier, quicker and more cost effective.

**All traps are based on many years of AgriSense scientific and biological experience in insect trapping.**

Traps are:

- Specifically designed to use the insect's own behaviour against it to maximise catch.
- Low profile for placement under and within items.
- Coated with our proprietary dry touch glue for long lasting insect trapping without sticky fingers.
- Supplied with an attractant which is designed to be an irresistible lure for the insects. Once attracted to the lure, the insect enters the trap, is caught and cannot escape.





## Tips & Techniques in Cockroach Trapping

- Use of traps will help inspire customers' confidence in the treatment, especially if used in long term surveillance. No catch means no need to treat. If insects are caught, a positive identification can be made and appropriate action taken to control the pest.
- Why conduct unnecessary night time inspections? Save time by using monitoring traps.
  - Use detectors for smaller areas, low populations or for a quick investigation. If populations are expected to be high or the area is large, use larger sized traps.
- Placement depends on the environment, but ideally traps should be placed at wall / floor junctions.
- Keeping records of catches helps build a knowledge of infestation and helps demonstrate to the customer the effectiveness of any service regime.
- For best and consistent results use the Lo-Line with attractant tablet (up to 8 weeks in use life). To save time and money in setting the traps in place, use the Pre-Baited alternative.
- Lo-Line traps and detectors can be used with attractants for other crawling insects such as Carpet Beetles, Museum Beetles, Biscuit Beetles, Larder Beetles etc.



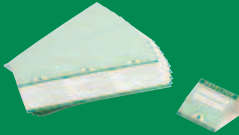

## Private Label Options

AgriSense produces many traps as private label products for customers to add their own logos and company details. We have extensive experience in designing, managing and manufacturing private label products, all with the quality of performance of AgriSense's own brand products. Traps can be customised to any shape or form and printed in any design.

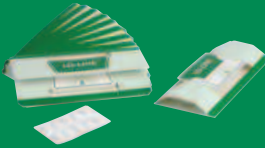


## Cockroach Trap Range

Small sticky traps designed to detect the location of cockroach infestations

Product	Description	Options
	<p><b>Detector Trap</b>                      Corner Style Detector Trap                      Compact design                      Can include sticky tape strip to secure in place for easy use.                      Flush fitting with wall / floor junction</p>	<p>AgriSense Branded                      Unprinted                      Private Label                      8mm Tablet or Pre-Baited RTU</p>
	<p><b>Blank Winged Detector Trap</b>                      A low profile trap (mini Lo-Line in form)                      Designed for narrow spaces                      Can include sticky tape strip to secure in place for easy use.</p>	<p>AgriSense Branded                      Unprinted                      Private Label                      8mm Tablet or Pre-Baited RTU</p>

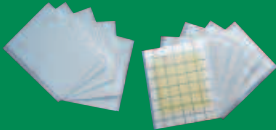
Large sticky traps designed to catch higher insect numbers

Product	Description	Options
	<p><b>Lo-Line™ Cockroach Trap</b>                      Well known and trusted AgriSense branded traps                      Flat profile, 4 entrances                      Ramped access                      Instructions in 6 languages</p>	<p>AgriSense Branded                      Unprinted                      Private Label                      13mm Tablet or Pre-Baited RTU</p>

### Attractant Tablets

	For use with Detectors 8mm Tablets		For use with Lo-Line Traps 13mm Tablets
---	---------------------------------------	--	--

### Sticky Pads for Cockroach Monitors

Product	Description	Options / Information
	<p><b>Plastic Sticky Pads for Cockroach Monitor</b>                      Cockroach glue and silicone quick release paper.</p>	<p>Available in 2 different styles                      Standard size 58mm x 79mm                      Size by design for large quantities                      Food attractant glue</p>

AgriSense products are available through national pest control product distributors. Should you be unable to find one, please contact us through our website and we will assist you with your enquiry.

Treforest Industrial Estate, Pontypridd, South Wales CF37 5SU, UK

Tel:+44 (0)1443 841155 Fax:+44 (0)1443 841152

mail@agrisense.co.uk www.agrisense.co.uk

AgriSense-BCS Limited is a wholly owned subsidiary of Suterra LLC



Certificate No. FM 28278